







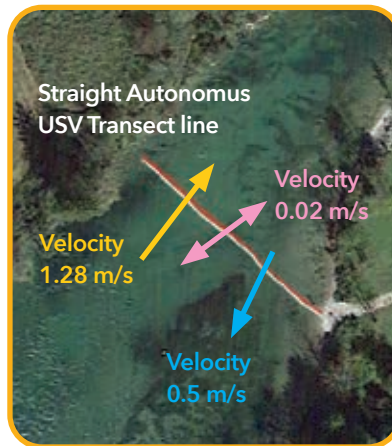
A NEW STANDARD IN ENVIRONMENTAL WATER MONITORING

-  **Three models** designed for the SonTek-M9 or RS5 ADCPs
-  **Flexible use** for bathymetry, discharge and current profiling
-  **Precision controlled**, improving data transect repeatability and backflow data collection
-  **Applicable for both** moving boat or stationary methods
-  **Dual GNSS** (aka GPSCompass) for reliable heading - an industry first!
-  **Coming soon:** vertical winch profiling and water quality sampling with YSI's EXO sonde!

Interested in learning more about the Surfbee?
We are here to help!

Xylem UK
Environmental Solutions
Tel: +44 (0)1462 673581
Mail: surfbee-uk@xylem.com

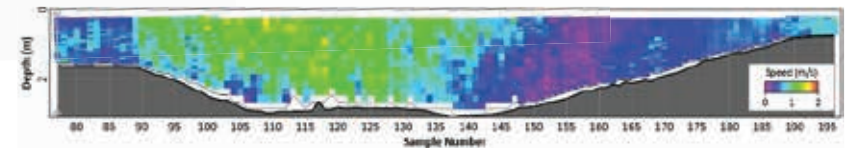
**PRECISE BOAT MOVEMENT
NO MATTER THE WATER
DIRECTION**



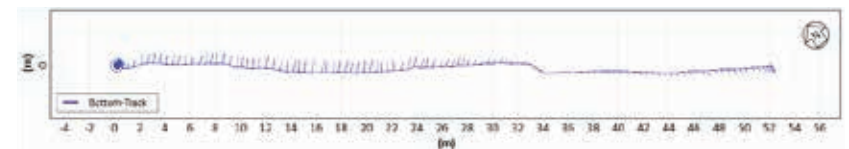
SonTek-M9 and Flow Scout collect data on the Loisach River, Germany.

Designed by a Hydrometrist for a Hydrometrist!

VELOCITY CONTOUR PLOT



STRAIGHT TRANSECT LINE IN HIGHLY VARIABLE WATER VELOCITY



DIRECTIONAL VELOCITY PLOT

