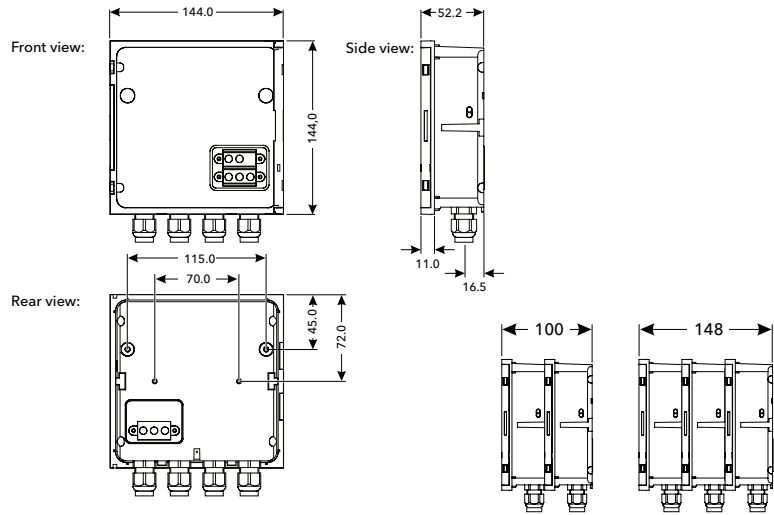




# IQ SENSOR NET MIQ modules for power supply

Module to supply voltage to the system components in the IQ SENSOR NET – thanks to the modular principle and simple installation this is individually customizable

We would like to inform you about the application range on our website



## Technical Data

Models	MIQ module MIQ/PS	MIQ module MIQ/24V
<b>MIQ Module Coupling at Front</b>	Combined mechanical and electrical connection for rapid docking and removal of the MIQ/TC 2020 3G Terminal/Controller (configured as Terminal) and for docking additional modules	
<b>MIQ Module Coupling at Rear</b>	Combined mechanical and electrical connection, for rapid coupling to MIQ modules, up to 3 modules as a stack mounted unit possible	
<b>Cable Feeds</b>	4 screw cable glands M 16 x 1.5	
<b>Terminal Connections</b>	Screw terminal strips Terminal area for solid conductors: 0.2 ... 4.0 mm <sup>2</sup> Terminal area for flexible conductors: 0.2 ... 2.5 mm <sup>2</sup> accessible by opening cover	
<b>IQ SENSOR NET Terminal Connections</b>	Terminal connections for the IQ SENSOR NET are available on each module and can be used as required: - for connecting sensors - as an input/output or for looping through/branching of the IQ SENSOR NET cable	
<b>Other Functions</b>	Two LEDs, yellow and red, for monitoring the operating voltage of the IQ SENSOR NET; IQ SENSOR NET connection, Integrated local identity function; Integrated switchable terminal resistor (SN terminator)	
<b>Electric Supply</b>	Directly via the IQ SENSOR NET	
<b>Ambient Conditions</b>	Operating temperature: -4 °F ... 131 °F (-20 °C ... +55 °C); Storage temperature: -13 °F ... 149 °F (-25 °C ... +65 °C)	
<b>Housing Material</b>	PC - 20 % GF (polycarbonate with 20 % fiberglass)	
<b>Protection Rating</b>	IP67	IP 66
	corresponding to NEMA 4X (not for direct conduit connections). Conduits need to be connected with flexible adapters (CC-Box), respectively with adapters CC-PM..	
<b>Dimensions (W x H x D)</b>	5.67 x 5.67 x 2.05 in. (144 x 144 x 52 mm)	
<b>Weight</b>	Approx. 1.1 pounds (0.5 kg)	
<b>Certifications</b>	ETL, cETL (conforms with relevant UL and Canadian standards), CE	
<b>Electromagnetic Compatibility</b>	EN 61326-1, Class B; FCC Class A	
<b>Integrated Overvoltage Protection</b>	According to EN 61326-1 enhanced overvoltage protection for the entire system, implemented in each component	
<b>Connection Medium Cable</b>	IQ SENSOR NET cable SNCIQ or SNCIQ/UG (underground cable with additional PVC coating): 2-wire with shield; 2 x 0.75 mm <sup>2</sup> ; Filler cord for easy connection of shield: 0.75 mm <sup>2</sup> ; pressure resistant to 10 bar	
<b>Connection Characteristics</b>	Energy and data transfer via 2 wire technique; resistant to reversed polarity; Comprehensive EMC shield control; cable topology within IQ SENSOR NET system as required, e.g. in the form of a line, tree, star, multiple star; Total cable length: max. 1000 m/1094 yds (without signal amplifying), with signal amplifying module MIQ/JBR additional 1000 m/1094 yds (max 3000 m/3282 yds)	
<b>Warranty</b>	3 years for defects of quality	

Model	Description	Order No.
MIQ/PS	Module IQ / power supply for voltage supply with wide range power supply for 100 - 240 VAC input voltage	480004
MIQ/24V	Module IQ / 24 V for voltage supply with 24 VAC or 24 VDC input voltage	480006

