



# Drinking water panel

Pre-assembled drinking water panel for the monitoring of turbidity, pH, conductivity, ORP, D.O. and free chlorine.

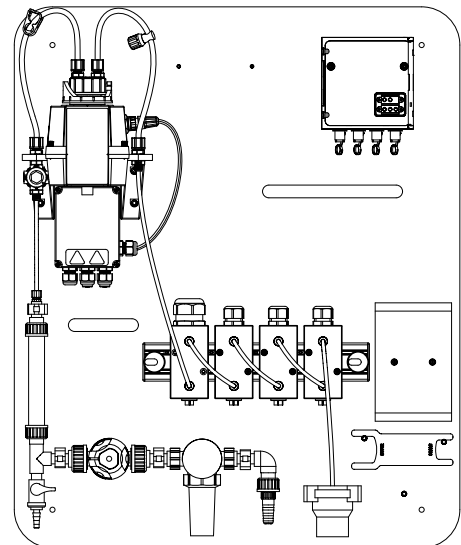
We would like to inform you about the application range on our website



Sensor	Measuring range	Accuracy	Resolution
<b>FCML 412-M12-2</b>	<b>Cl</b> 0.005 ... 2.000 mg/l	< 1 % up to 16 mg/l	0.001 mg/l
<b>FCML 412 M12-20</b>	0.05 ... 20.00 mg/l		0.01 mg/l
<b>SenTix® 945 (-P)</b>	<b>pH</b> 0.000 ... 14.000 pH	pH: ± 0.004; (IDS measurement electronics) U [mV]: ± 0.2; T [°C]: ± 0.1	0.001 pH; 0.1 mV
<b>SensoLyt® 900-ORP-P</b>	<b>ORP</b> -1250.0 ... +1250.0 mV	U [mV]: ± 0.2 T [°C]: ± 0.1	0.1 mV
<b>TetraCon® 925 (-P)</b>	<b>LF</b> $\alpha$ : 0.0 $\mu$ S/cm ... 2000 mS/cm SAL: 0.0 ... 70.0 TDS: 0 mg/l ... 199.9 g/l	± 0.5 % from measured value; T [°C]: ± 0.1	$\alpha$ : Up to 0.1 $\mu$ S/cm or until 0.01 mS/cm SAL: 0.1 TDS: Up to 1 mg/l or until 0.01 g/l
<b>LR 925/01(-P)</b>	0.01 ... 199.9 $\mu$ S/cm	± 0.5 % from measured value	Up to 0.01 $\mu$ S/cm
<b>Turb PLUS 2000</b>	<b>Turb</b> Factory setting: 0 ... 100 NTU; optional: 0 ... 10 und 0 ... 1000 NTU	Up to ± 2 % of the measured value or ± 0.02 NTU	Up to 0.0001 NTU
<b>FDO® 925(-P)</b> at 20 °C (68 °F)	<b>O<sub>2</sub></b> 0.00 ... 20.00 mg/l 0.0 ... 200.0 %	± 1.5 %	0.01 mg/l 0.1 %

## Panel / Measuring system

<b>Outputs</b>	Relais: Number selectable Power outputs: (mA) Number selectable Digital: Profinet, Profibus, Modbus RTU, Modbus TCP, Ethernet/IP
<b>Data logger</b>	Data memory for up to 525,600 data sets
<b>USB interface</b>	Included as standard on all panels
<b>Electrical power supply</b>	IQ SENSOR NET: 100 ... 240 VAC (50/60 Hz), alternative 24 V AC/DC Turbidity analyzer: 100 ... 240 VAC (47-63 Hz), 80 VA
<b>Sample composition</b>	5 ... 45 °C (41 ... 113 °F); inlet pressure max. 6 bar; salinity or chloride: 500 mg/l
<b>Mechanics</b>	Panel: PVC rigid foam; IQ SENSOR NET: Polycarbonate with 20 % glass fibre; Turbidity analyzer: ABS Flow-through cells/piping: PVC; Tubing: PU Dimensions 850 x 700 x 225 mm (H x W x maximum D)
<b>Weight</b>	Without/with Turbidity analyzer approx. 10 kg/ approx. 12 kg
<b>Certifications</b>	CE, UKCA
<b>Warranty</b>	Varies, depending on the sensor, transducer, analyzer, etc.



Components	Options	Order code
<b>Drinking water panel</b>	with pressure reducer, valve, tap, flow indicator, on water-repellent panel	8C-
<b>Turbidity Analyzer</b>	without turbidity analyzer	0
	acc. to ISO EN DIN 7027 (Infra red)	1
	acc. to EPA 180.1 (white light)	2
<b>Sensors</b> (max. 4 sensors in total)	no chlorine sensor	0
	free chlorine	1
	<b>Number of other parameters</b> (pH, ORP, Cond, O <sub>2</sub> )	1
		2
		3
		4
<b>MIQ modules</b>	<b>MIQ/IDS2</b>	2
	<b>MIQ/IDS4</b>	4
	Not every combination is available. Sensors and IQ SENSOR NET components must be ordered separately.	
<b>Your Ordner No.</b>	If you have any questions, please contact our customer service.	8C- 0



Xylem Analytics Germany Sales GmbH & Co. KG · Am Achalaich 11 · 82362 Weilheim · Germany  
 Phone: +49 881 1830 · Fax: +49 881 183-420 · Info.XAGS@xylem.com · www.xylemanalytics.com  
 All names are registered tradenames or trademarks of Xylem Inc. or one of its subsidiaries. Technical changes reserved. © 2023 Xylem Analytics Germany Sales GmbH & Co. KG.

