

# WTW – IQ SENSOR NET Highlights

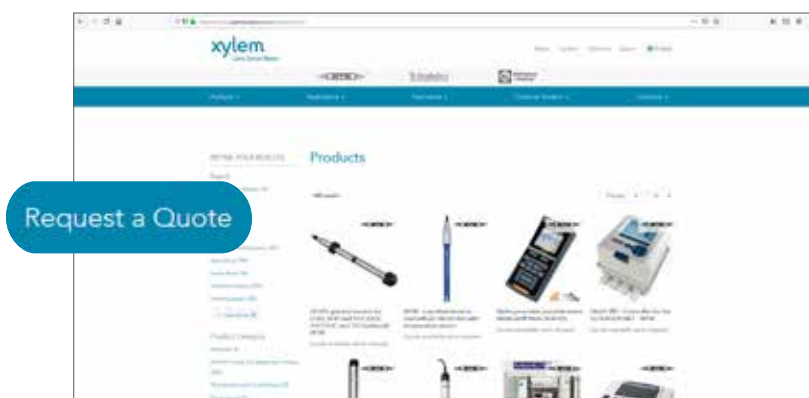
|      |   |   |
|------|---|---|
| 2001 | <b>IQ SENSOR NET</b>                            | the <b>multi-parameter</b> measuring system offers unlimited possibilities for online measurements  |
|      | <b>VisoTurb®</b> and <b>ViSolid®</b>            | <b>turbidity</b> and <b>TSS</b> sensors with their revolutionary ultrasonic cleaning system give "low-maintenance" a completely new meaning         |
|      | <b>SensoLyt® 700 IQ</b>                         | digital <b>pH</b> Sensor  |
| 2002 | <b>AmmoLyt® 700 IQ</b>                          | enables reliable Online measurement of <b>Ammonium</b> directly in the process  |
|      | <b>TetraCon® 700 IQ</b>                         | digital 4 electrodes sensor   |
| 2003 | <b>NitraLyt® 700 IQ</b>                         | is a perfect supplementary <b>nutrient parameter</b> (Nitrate) for Online measurement   |
| 2004 | <b>NitraVis®, CarboVis®</b> and <b>NiCaVis®</b> | spectral "in-situ" Online sensors for <b>Nitrate</b> , <b>Carbon</b> and <b>TSS</b> measurement   |
| 2005 | <b>System 182</b>                               | compact 2 channel transmitter   |
| 2006 | <b>VARiON® 700 IQ</b>                           | <b>ammonium</b> and <b>nitrate</b> multisensor with automatic compensation of interference ions   |
|      | <b>MIQ/Blue PS</b>                              | module for <b>radio connection</b>  |
| 2007 | <b>FDO® 700 IQ</b>                              | <b>optical D.O.</b> sensor  |
| 2008 | <b>MIQ/TC 2020 XT</b>                           | terminal/controller with <b>USB</b> and dual-processor function   |
|      | <b>System 182 XT-4</b>                          | perfect for up to 4 sensors   |
| 2012 | <b>UV-VIS sensors - Next generation</b>         | CarboVis®, NitraVis® and NiCaVis® sensors with the <b>optical design</b> , integrated <b>ultrasonic cleaning</b> technology and high-tech materials |
|      | <b>IFL 700 IQ</b>                               | interface level measurement for <b>sludge</b> management  |
| 2013 | <b>P 700 IQ</b>                                 | <b>PO4</b> analyzer   |
| 2014 | <b>DIQ/S 181</b>                                | controller for 1 sensor   |
|      | <b>MIQ/MC3</b>                                  | controller with <b>PROFINET</b>   |
| 2015 | <b>MIQ/WL PS</b>                                | module for <b>radio transmission</b>  |
| 2016 | <b>DIQ/S 282/284</b>                            | system for up to 4 sensors  |
|      | <b>IQ WEB CONNECT</b>                           | free-of-charge remote access to IQ SENSOR NET   |
| 2017 | <b>MIQ/TC 2020 3G</b>                           | Terminal with <b>color display</b>  |
| 2019 | <b>Alyza IQ</b>                                 | new generation of wet chemical analyzers for <b>NH<sub>4</sub></b> and <b>PO<sub>4</sub></b>  |
| 2020 |   |   |
| 2021 | <b>System 281 Terminal IQ Color Sensors</b>     | Modern controller for one single sensor<br>Cost-effective display and operation unit<br>For continuous <b>color measurement</b>                     |
| 2022 | <b>System 281 MOD</b><br><b>System 281 HART</b> | Extension with Modbus protocol<br>Extension with HART protocol  |



# www.xylymanalytics.com

## News around the clock

Our new website is designed in the Xylem colors and summarized under the web address [www.xylymanalytics.com](http://www.xylymanalytics.com). This website brings together several Xylem Analytics key lab & field brands: WTW, SI Analytics and Bellingham + Stanley. We are presenting you a broader product range with additional brands as well as service and information about the application of our products. Directly request a quote for your required products. We are adding and optimizing its content continuously.



### New products

Take a look: Here you can find new products, developments, innovative measurement and analysis instruments, helpful accessories, useful system extensions, special sets, and much more.

### Applications

On our website you will find the solution to your measurement tasks in research, analysis and quality control – and additionally many application.

### Downloads

Are you looking for an operating manual, application report, or do you need a certificate? Everything is provided for you in our download area.



# WTW – Laboratory and Field Instrumentation

The product portfolio includes products for multi-parameter measurement, pH, ORP, ion-selective, oxygen, conductivity, BOD and depletion measurement, as well as meters for photometry, turbidity measurement and colony counts.

Particularly interesting for the analysis and monitoring of wastewater (in municipal wastewater treatment plants) and the perfect complement to WTW's process instrumentation:

## Are you interested?

Please order the new WTW catalog "Lab & Field Instrumentation"!



## photoLab<sup>®</sup> SERIES



- OptRF – the revolutionary optical reagent free measurement of COD, nitrate and nitrite
- Photometric tasks for routine to special applications from water to wine
- PC-driven color measurement for quality control - from CIE to Gardner

## OptRF – faster as the fastest digestion

### The photoLab<sup>®</sup> 7000 series



## OxiTop<sup>®</sup>



## More than just BOD

### OxiTop<sup>®</sup>-IDS for all applications of respirometric measurements

Regardless whether aerobic or anaerobic examinations, because of its versatility the OxiTop<sup>®</sup>-IDS is suited for both. All heads can be used independently from any meter for normal BOD measurements between one and seven days.

### The new measuring head OxiTop<sup>®</sup>-i

Respirometric BOD secure, easy, convenient: direct input of sample volume, display of the curve at the head and call-up of interim values.



## Portable Meters

### The digital MultiLine® IDS series and the proven analog ProfiLine family

There are meters for digital and for conventional sensors. All of them are equipped with a closed, easy to clean silicone keyboard that can easily be operated while wearing gloves.

The **MultiLine® IDS** series are digital multi-parameter meters for pH, ORP, dissolved oxygen, conductivity and turbidity. They have a color graphic display, a large memory, two USB inputs, up to three universal sensor inputs and support GLP compliant measurements through automatic documentation.

Furthermore, the digital portable meters are ready for wireless communication between meter and sensor.

The **ProfiLine** portable meters work with analog sensors. They are available as single or multi-parameter meters for simultaneous measurement of two parameters. Basic models are designed for routine measurement without data logging functions, but there are also meters available with memory and USB interfaces for data transfer to laptop or PC.



- Robust and water-proof
- Single and multi parameter instruments available
- Up to 3 parameters simultaneously
- IDS wireless ready
- Also available as a set with various sensors



## SI Analytics – Process Electrodes



We offer a wide range of electrodes especially for the challenges in industrial processes (e.g. pharma, cosmetics and detergents) as well as food and beverage productions:

Our electrodes are customized to the requirements of your applications and are known for their quality, reliability and long durability. We fulfill this demand by manufacturing our electrodes with the greatest precision and a great measure of care following the most modern manufacturing methods in Germany. Every single electrode must meet the strict quality guidelines of our final inspection.

**Are you interested?** Please order your copy of the SI Analytics catalog „Process Equipment“!





27.00

Are you interested in  
**Level Measurement** or  
further Application?



We're here to help:

+49 881 1830

[Info.WTW@xylem.com](mailto:Info.WTW@xylem.com)

## Our Brands

**AANDERAA**

**BS** Bellingham  
+ Stanley

**-ebro-**

**mjkl**

O-I Analytical

SI Analytics

**SonTek**

**TIDELAND**

**WTW**

**YSI**

Xylem is a leading global water technology company committed to developing innovative technology solutions to the world's water and critical infrastructure challenges.

To learn more about all of Xylem's brands, visit [www.xyleminc.com/en-us/brands/](http://www.xyleminc.com/en-us/brands/)

# Xylem Analytics

## Capabilities of Proven Brands

Xylem's analytics business is an expanding family of long-established, leading brands for quantitative and qualitative analysis of samples. Our commitment to our customers is to provide them with the best tools available to solve their measurement challenges in processes, in the field, the laboratory or wherever they may be.

While serving a wide range of industries including agriculture, energy, source water, wastewater, drinking water, groundwater, R&D, ocean monitoring, food & beverage, life sciences and more, we have an extended depth of product offerings and applications expertise in four key industries **Wastewater**, **Ocean/Coastal**, **Surface Water** and **Food & Beverage**.



SI Analytics



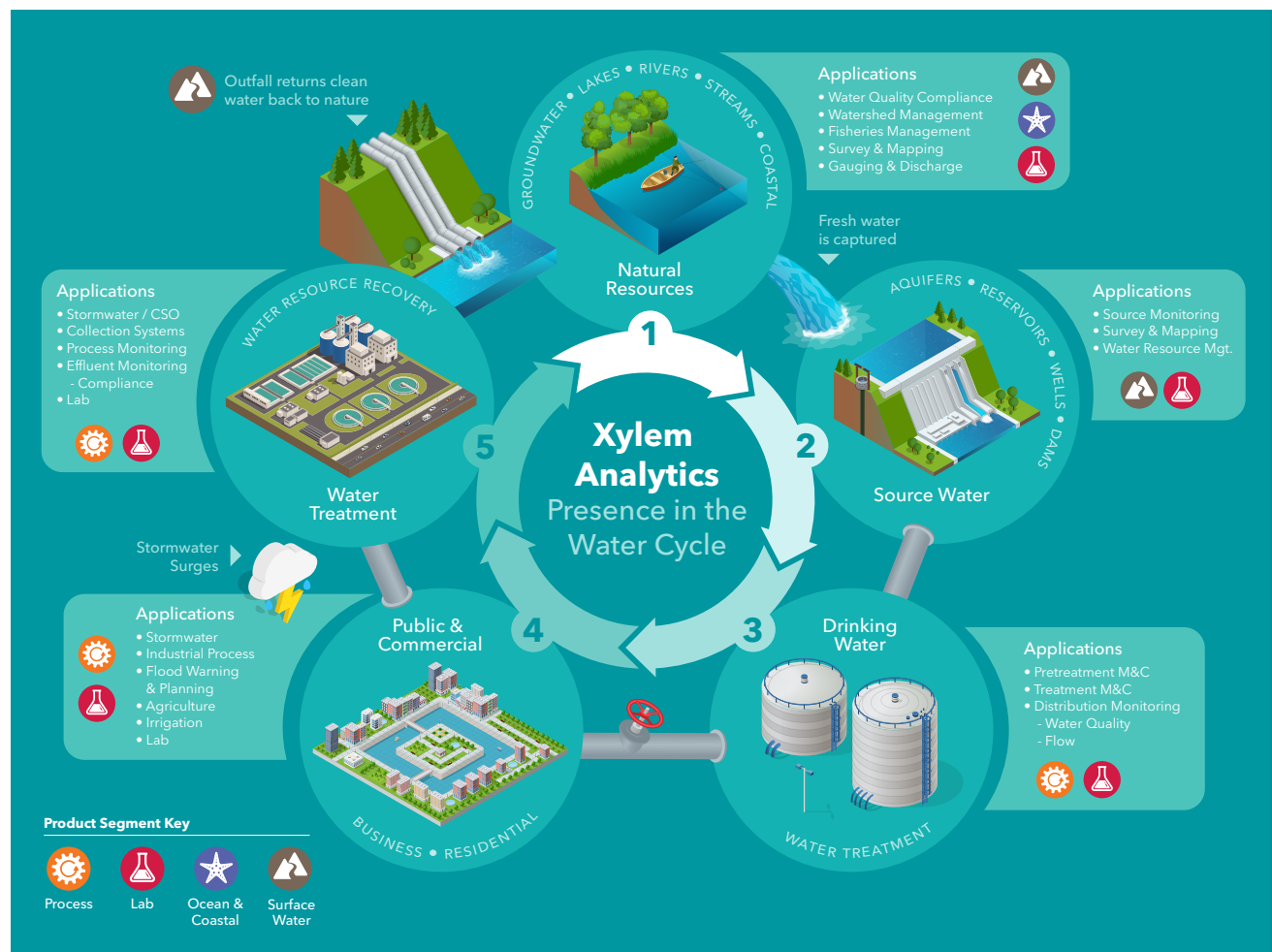
AANDERAA

-ebro-



O+Analytical

mjk



see also [www.xylemanalytics.com/en/company/about-us](http://www.xylemanalytics.com/en/company/about-us)



Xylem Analytics Germany Sales GmbH & Co. KG, WTW  
Am Achalaich 11 · D-82362 Weilheim · Germany · Phone: +49 881 1830 · Fax: +49 881 183-420 · Info.WTW@xylem.com

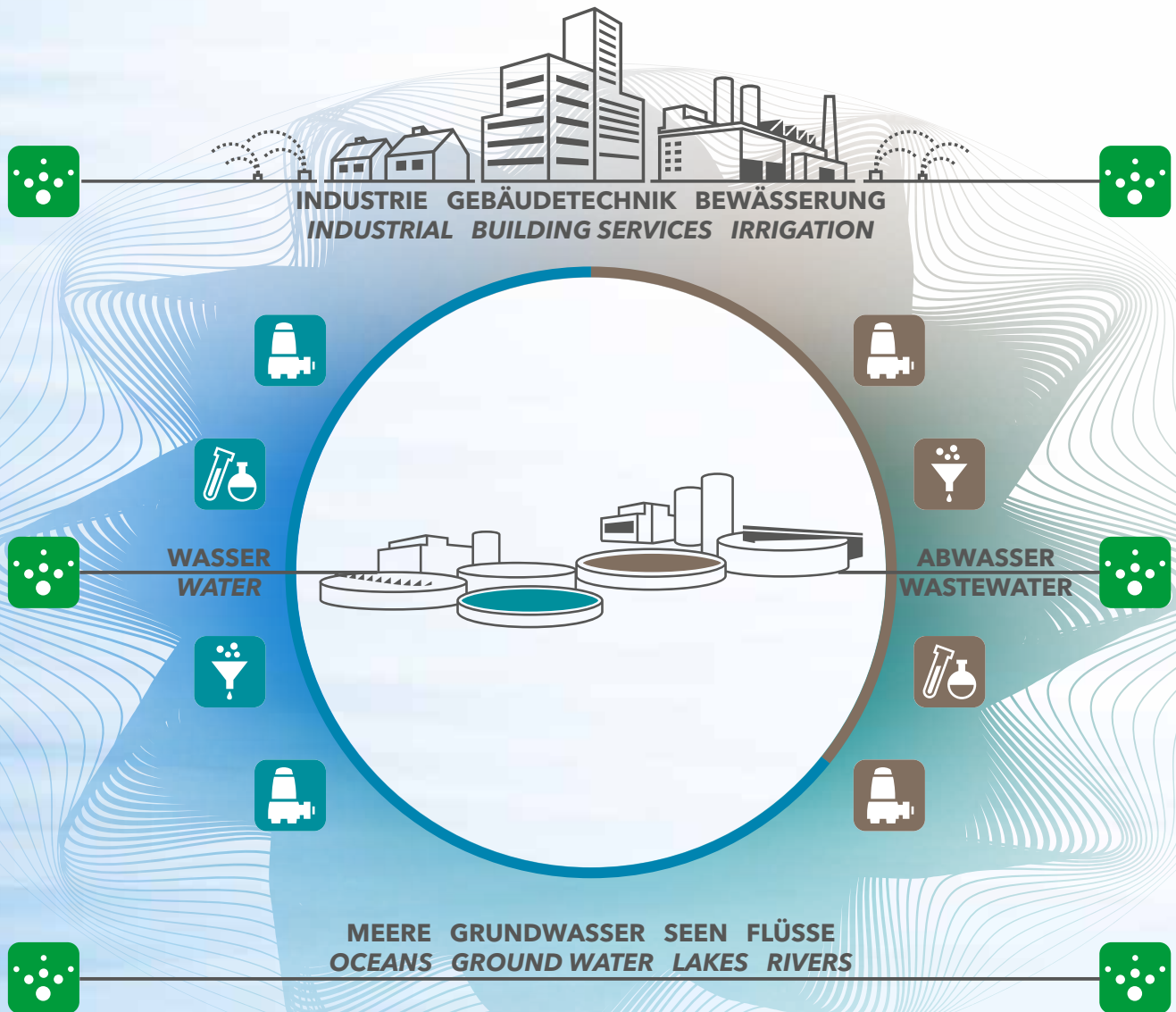
[www.xylemanalytics.com](http://www.xylemanalytics.com)

# Water Cycle

## Xylem provides the right solutions

Xylem offers intelligent and innovative system solutions for all water challenges. With our premium brands we are focusing on water and wastewater for **Transport, Treatment, Analyzing and Monitoring**. Let's solve water together. Xylem has the answers for your needs, your requirements and your questions.

Talk to us!



### INDUSTRIAL:

Processing water for heating, cooling, cleaning, circulating and mixing to industrial facilities. Key markets include: oil and gas, mining, food and beverage, pulp and paper; aquaculture; marine; car washes.

### COMMERCIAL:

Water supply and HVAC heating and cooling systems to commercial properties, including apartment buildings, retail stores, hospitals and hotels.



Transport  
Transport



Transport  
Transport

## Water & Wastewater Transport

Xylem pump systems draw water from sources and transport it to treatment plants.

Xylem pumps move water from treatment plants to storage facilities, and on through the distribution system to consumers and end users.

Once clean water has served human needs, Xylem pumps transport wastewater to treatment stations.



Behandlung  
Treat



Behandlung  
Treat

## Water & Wastewater Treatment

Xylem filtration and disinfection technologies clean and purify water before it enters the system.

Xylem biological, filtration and disinfection treatment equipment removes contaminants from wastewater before it is reused (e.g., for irrigation, industrial cooling, recharging groundwater aquifers) or returned to the environment.



Analyse  
Analyze



Analyse  
Analyze

## Analysis & Measurement Instrumentation

Xylem analytical systems test and ensure water quality.

Xylem analytical systems measure water quality and monitor the environment.



Netzwerk  
Network



### RESIDENTIAL:

Water supply and HVAC heating and cooling systems to homes.

### AGRICULTURE:

Irrigation to farms, golf courses and turf applications.



Xylem Analytics Germany Sales GmbH & Co. KG, WTW  
Am Achalaich 11 · D-82362 Weilheim · Germany · Phone: +49 881 1830 · Fax: +49 881 183-420 · Info.WTW@xylem.com

www.xylemanalytics.com  
Info.WTW@xylem.com



# Index

|          |    |           |    |                               |    |                             |    |
|----------|----|-----------|----|-------------------------------|----|-----------------------------|----|
| 8X-yyyyy | 65 | 472005    | 57 | ADA-DF 1                      | 73 | MZ WIS 40 ST 44             | 73 |
| 104100   | 17 | 472007    | 57 | ADA-DF 7                      | 73 | NiCaVis® 701 IQ NI          | 32 |
| 104150   | 17 | 472103    | 58 | ADA-DF 9                      | 73 | NiCaVis® 701 IQ NI          | 38 |
| 107040   | 30 | 472104    | 58 | ADA/D-SUB                     | 71 | NiCaVis® 705 IQ             | 32 |
| 107042   | 31 | 472105    | 58 | ADA-DW 2                      | 73 | NiCaVis® 705 IQ             | 38 |
| 107044   | 31 | 472106    | 58 | ADA-G 1"                      | 73 | NiCaVis® 705 IQ NI          | 32 |
| 107045   | 31 | 472110    | 56 | ADA-WA 1                      | 73 | NiCaVis® 705 IQ NI          | 38 |
| 107046   | 31 | 472130    | 56 | Alyza IQ NH <sub>4</sub> -110 | 34 | NiCaVis® 705 IQ NI SF       | 32 |
| 107047   | 31 | 480004    | 53 | Alyza IQ NH <sub>4</sub> -111 | 34 | NiCaVis® 705 IQ NI SF       | 38 |
| 107070   | 30 | 480006    | 53 | Alyza IQ NH <sub>4</sub> -112 | 34 | NiCaVis® 705 IQ SF          | 32 |
| 107080   | 30 | 480008    | 55 | Alyza IQ PO <sub>4</sub> -111 | 41 | NiCaVis® 705 IQ SF          | 38 |
| 108533   | 73 | 480013    | 55 | Alyza IQ PO <sub>4</sub> -112 | 41 | NiCaVis® 705 IQ SF Co       | 38 |
| 108540   | 72 | 480014    | 55 | Alyza IQ PO <sub>4</sub> -121 | 41 | NiCaVis® 705 IQ SF Co       | 45 |
| 109100   | 16 | 480015    | 55 | Alyza IQ PO <sub>4</sub> -122 | 41 | NiCaVis® 705 IQ TS          | 32 |
| 109114   | 16 | 480016    | 55 | AmmoLyt®Plus 700 IQ           | 30 | NiCaVis® 705 IQ TS          | 38 |
| 109115   | 16 | 480018    | 55 | BC-Turb/DW                    | 27 | NiCaVis® 705 IQ TS Co       | 38 |
| 109115EX | 16 | 480019    | 72 | BE/M 170                      | 72 | NiCaVis® 705 IQ TS Co       | 45 |
| 109119   | 16 | 480025    | 55 | BE/R 170-D                    | 72 | NitraLyt®Plus 700 IQ        | 30 |
| 109125   | 16 | 480040    | 71 | BE/ST 170                     | 72 | NitraVis® 701 IQ            | 32 |
| 109126   | 16 | 480042    | 71 | BE/ST 170-M                   | 72 | NitraVis® 701 IQ NI         | 32 |
| 109170   | 15 | 480044    | 71 | BE/ST 170-R                   | 72 | NitraVis® 701 IQ TS         | 32 |
| 109171   | 15 | 480045    | 71 | CarboVis® 701 IQ              | 38 | NitraVis® 705 IQ            | 32 |
| 109195   | 16 | 480046V   | 71 | CarboVis® 701 IQ TS           | 38 | NitraVis® 705 IQ NI         | 32 |
| 109195EX | 16 | 480048    | 71 | CarboVis® 705 IQ              | 38 | NitraVis® 705 IQ TS         | 32 |
| 109233   | 17 | 480050    | 71 | CarboVis® 705 IQ TS           | 38 | Oxi 298 NTC                 | 63 |
| 109234   | 17 | 480068    | 71 | CarboVis® 705 IQ TS Co        | 38 | Oxi 298 Pt1000              | 63 |
| 109237   | 73 | 480080    | 73 | CarboVis® 705 IQ TS Co        | 45 | Oxi ML 41                   | 13 |
| 109239   | 17 | 480100    | 73 | CH                            | 72 | PB-M-L/R24                  | 69 |
| 109260   | 71 | 480102    | 73 | CHEMtrac 830 M                | 73 | PB-M-S/1                    | 69 |
| 109261   | 71 | 480106    | 73 | Chlorine 3107M                | 47 | PB-W/115V                   | 69 |
| 109272   | 72 | 480108    | 73 | CH/SO                         | 72 | PB-W/230V                   | 69 |
| 109273   | 72 | 480110    | 73 | CI 298/P - 230 VAC            | 64 | pH 298 NTC                  | 63 |
| 109274   | 71 | 480200    | 65 | CI 298/P Flow - 230 VAC       | 64 | pH 298 Pt100                | 63 |
| 109276   | 72 | 480201    | 65 | CI 298 Pt1000                 | 63 | pH 298 Pt1000               | 63 |
| 109279   | 72 | 481034    | 32 | Cleaning Air Box - 230 VAC    | 72 | PL 80-120pH                 | 17 |
| 109280   | 72 | 481035    | 32 | ColorVis 705 IQ               | 45 | PL 80-225pH                 | 17 |
| 109281   | 72 | 481036    | 38 | D 222/3                       | 73 | PL 81-120 pH VP             | 17 |
| 109283   | 72 | 481038    | 38 | D 700/N                       | 73 | PL 82-225pH VP              | 17 |
| 109284   | 71 | 481044    | 32 | D-CL                          | 73 | PMS/IQ                      | 71 |
| 109286   | 71 | 481045    | 32 | DIQ/CHV                       | 57 | S 200                       | 72 |
| 109295   | 71 | 481046    | 32 | DIQ/JB                        | 57 | SACIQ-1,5                   | 71 |
| 109304   | 71 | 481047    | 32 | DIQ/S 281-CR2                 | 58 | SACIQ-7,0                   | 71 |
| 109305   | 71 | 481048    | 38 | DIQ/S 281-CR2/24V             | 58 | SACIQ-15,0                  | 71 |
| 109306   | 71 | 481049    | 38 | DIQ/S 281-HART                | 58 | SACIQ-20,0 SW               | 71 |
| 109320   | 71 | 481050    | 38 | DIQ/S 281-MOD                 | 58 | SC-FDO 700                  | 10 |
| 109323   | 71 | 481051    | 38 | DIQ/S 282-CR3                 | 56 | SC-FDO 701                  | 10 |
| 109361   | 72 | 481052    | 32 | DIQ/S 284-CR6                 | 56 | S/CH                        | 72 |
| 109362   | 72 | 481052    | 38 | Drinking water panel          | 65 | SD/K 170                    | 71 |
| 109444EX | 67 | 481053    | 32 | EBST 700-DU/5N                | 73 | Sensolyt® 650-7             | 16 |
| 109445EX | 67 | 481053    | 38 | EH2/U 170                     | 71 | Sensolyt® 650-7 EX          | 16 |
| 109446EX | 67 | 481054    | 32 | EH/F 170-1,5                  | 72 | Sensolyt® 700 IQ            | 15 |
| 109447EX | 67 | 481054    | 38 | EH/F 170-2,5                  | 72 | Sensolyt® 700 IQ SW         | 15 |
| 191230   | 63 | 481055    | 32 | EH/U 170                      | 71 | Sensolyt® DWA               | 16 |
| 191232   | 63 | 481055    | 38 | EH/W 170                      | 71 | Sensolyt® PtA               | 16 |
| 191234   | 63 | 481056    | 32 | EH/W 172                      | 72 | Sensolyt® PtFA              | 16 |
| 201150   | 73 | 481057    | 32 | EH/WB                         | 72 | Sensolyt® SE                | 16 |
| 201187   | 47 | 481058    | 32 | ESS 700 VA/N                  | 73 | Sensolyt® SEA               | 16 |
| 201192   | 47 | 481058    | 38 | ESS-WA 700/VA                 | 73 | Sensolyt® SEA EX            | 16 |
| 201640   | 12 | 481059    | 32 | EST-LRD                       | 73 | Sensolyt® TFA               | 16 |
| 201641   | 12 | 481059    | 38 | EX monitor LF-0               | 67 | SenTix®ML 70                | 17 |
| 201644   | 12 | 481060    | 38 | EX monitor LF-1               | 67 | SenTix®ML ORP               | 17 |
| 201646   | 12 | 481060    | 45 | EX monitor pH-0               | 67 | SL 80-120 PH                | 17 |
| 201650   | 11 | 481065    | 38 | EX monitor pH-1               | 67 | SL 81-120 PHT-VP            | 17 |
| 201652   | 11 | 481065    | 45 | FCML 412 N                    | 47 | SNCIQ-100                   | 71 |
| 201653   | 11 | 481066    | 38 | FDO® 700 IQ                   | 11 | SNCIQ-SO                    | 71 |
| 201654   | 10 | 481066    | 45 | FDO® 700 IQ SW                | 11 | SSH/IQ                      | 71 |
| 201655   | 10 | 481067    | 45 | FDO® 701 IQ                   | 11 | TCML N                      | 47 |
| 201660   | 11 | 481200    | 43 | FDO® 701 IQ SW                | 11 | Terminal IQ                 | 55 |
| 201678   | 13 | 503200    | 69 | IFL 700 IQ                    | 43 | TetraCon® 325               | 20 |
| 201690   | 13 | 503201    | 69 | IN/SET1                       | 71 | TetraCon® 700-7             | 20 |
| 201931   | 13 | 503250    | 69 | IN/SET2                       | 71 | TetraCon® 700-7 EX          | 20 |
| 203745   | 73 | 503280    | 69 | IN/SET3                       | 71 | TetraCon® 700 IQ            | 19 |
| 203753   | 73 | 505123    | 72 | Isolated amplifier            | 67 | TetraCon® 700 IQ SW         | 19 |
| 203755   | 73 | 505124    | 72 | Isolated amplifier Opt. 336   | 67 | TetraCon® DU/T              | 20 |
| 203761   | 73 | 505544    | 72 | Kal Kit Turb 2110/DW          | 27 | THS/IQ                      | 71 |
| 203773   | 73 | 505572    | 72 | Kal Kit Turb/DW               | 27 | TriOxmatic® 690-7           | 13 |
| 203777   | 73 | 600010    | 24 | Kal Kit Turb PLUS 2000        | 27 | TriOxmatic® 700 IQ          | 12 |
| 291230   | 63 | 600011    | 24 | KI/LF-0,4/MIQ                 | 72 | TriOxmatic® 700 IQ SW       | 12 |
| 291234   | 63 | 600012    | 25 | KI/pH-MIQ/S                   | 72 | TriOxmatic® 701-7           | 13 |
| 300944EX | 67 | 600013    | 25 | LF 298 NTC                    | 63 | TriOxmatic® 701 IQ          | 12 |
| 300945EX | 67 | 600026    | 27 | LF 298 Pt1000                 | 63 | TriOxmatic® 702 IQ          | 12 |
| 301150   | 21 | 600036    | 27 | LR 325/01                     | 21 | Turb PLUS 2020              | 27 |
| 301252   | 20 | 600037    | 27 | LR 325/001                    | 21 | Turb PLUS 2120              | 27 |
| 301960   | 20 | 600041    | 27 | LRD 01-7                      | 21 | Turb PLUS 2120 Set          | 27 |
| 301961   | 21 | 600052    | 27 | LRD 325-7                     | 20 | UA 55                       | 71 |
| 301962   | 21 | 600054    | 27 | LR ML                         | 21 | UA 130                      | 71 |
| 302222   | 21 | 600056    | 27 | MIQ/3-MOD                     | 55 | UV 701 IQ NOx               | 32 |
| 302229   | 20 | 801254    | 63 | MIQ/24V                       | 53 | UV 701 IQ SAC               | 38 |
| 302316   | 20 | 801260    | 64 | MIQ/C6                        | 55 | UV 705 IQ NOx               | 32 |
| 302316EX | 20 | 801261    | 64 | MIQ/CHV PLUS                  | 55 | UV 705 IQ SAC               | 38 |
| 302500   | 19 | 825010    | 34 | MIQ/CR3                       | 55 | VARION®Plus 700 IQ          | 30 |
| 302501   | 19 | 825011    | 34 | MIQ/IC2                       | 55 | VARION®Plus CI              | 31 |
| 303202   | 73 | 825012    | 34 | MIQ/JB                        | 55 | VARION®Plus K               | 31 |
| 303209   | 73 | 825511    | 41 | MIQ/MC3                       | 55 | VARION®Plus NH <sub>4</sub> | 31 |
| 391230   | 63 | 825512    | 41 | MIQ/MC3-MOD                   | 55 | VARION®Plus NO <sub>3</sub> | 31 |
| 391234   | 63 | 825521    | 41 | MIQ/MC3-PR                    | 55 | VARION® Ref                 | 31 |
| 401995   | 73 | 825522    | 41 | MIQ/PS                        | 53 | VIS FT-1                    | 73 |
| 470020   | 53 | 860151    | 47 | MIQ/R6                        | 55 | ViSolid®700 IQ              | 25 |
| 470021   | 55 | 900107    | 72 | MIQ/TC 2020 3G                | 53 | ViSolid®700 IQ SW           | 25 |
| 471020   | 55 | 902888    | 71 | MIQ/WL PS SET                 | 55 | VisoTurb® 700 IQ            | 24 |
| 471022   | 55 | 285113213 | 17 | MR/SD 170                     | 71 | VisoTurb® 700 IQ SW         | 24 |
| 471023   | 55 | 285113308 | 17 | MULTILINE 1000 115VAC         | 65 | WA 700/2                    | 73 |
| 471026   | 55 | 285113550 | 17 | MULTILINE 1000 230VAC         | 65 | WA 700/10                   | 73 |

# Xylem Watermark



## Improves Access to Water and Education on Water Issues

Committed to our mission. Xylem Watermark, our corporate citizenship and social investment program, has a twofold mission: provide and protect safe water resources for communities in need, and educate people about water issues. In a world where more than 650 million people lack access to water, and 2.4 billion lack improved sanitation\*, we're using our expertise and technologies to make a difference.

### Focused on urgent needs.

We work to create measurable results in three key areas:

- School and community projects, providing safe water, sanitation, and hygiene (WASH) education to students, teachers and families
- Disaster response, delivering water in the aftermath of emergencies
- Disaster risk reduction, securing water in vulnerable areas

### Involving our employees.

We amplify the impact of Watermark through our employee engagement program. Their volunteer work and financial contributions advance our sustainable solutions.

Make your mark.

To learn more about Watermark, visit [xylemwatermark.com](http://xylemwatermark.com)



\*Source: UNICEF/WHO

## General Information

1. Special versions of instruments on request.
2. Accessories and spare parts for older models - please make separate inquiry.
3. In order to avoid our customers having to pay a surcharge for small-volume purchases, we supply our consumables in practical minimum ordering quantities.

### Technical alterations

The technical description corresponds to the current products. Alterations because of technical improvements are possible.

### Illustrations

We draw your attention to the fact that the illustrations are intended to clarify certain points. There may therefore be discrepancies between the illustrations and the written text.

### Liability

We accept no responsibility for printing errors, writing errors or mistakes in the translation.

Edition December 2022

## Publisher



Xylem Analytics Germany Sales  
GmbH & Co. KG, WTW  
Am Achalaich 11  
82362 Weilheim  
Germany

Phone +49 881 1830

Fax +49 881 183-420

Info.WTW@xylem.com

[www.xylemanalytics.com](http://www.xylemanalytics.com)

# Xylem |'zīləm|

- 1) The tissue in plants that brings water upward from the roots;
- 2) a leading global water technology company.

We're a global team unified in a common purpose: creating advanced technology solutions to the world's water challenges. Developing new technologies that will improve the way water is used, conserved, and re-used in the future is central to our work. Our products and services move, treat, analyze, monitor and return water to the environment, in public utility, industrial, residential and commercial building services settings. Xylem also provides a leading portfolio of smart metering, network technologies and advanced analytics solutions for water, electric and gas utilities. In more than 150 countries, we have strong, long-standing relationships with customers who know us for our powerful combination of leading product brands and applications expertise with a strong focus on developing comprehensive, sustainable solutions.

For more information on how Xylem can help you, go to [www.xylem.com](http://www.xylem.com)



## Regional Sales Offices

|   |   |   |
|---|---|---|
| <b>UK:</b><br>Xylem Analytics UK Limited<br>Tel +44 1462 673581<br><a href="mailto:salesuk@xylem.com">salesuk@xylem.com</a><br><a href="http://www.xylemanalytics.co.uk">www.xylemanalytics.co.uk</a>             | <b>Asia:</b><br>Xylem Analytics Japan<br>Tel +81 (0)44-222-0009<br><a href="mailto:ysijapan.support@xylem.com">ysijapan.support@xylem.com</a><br><a href="http://www.xylem-analytics.jp">www.xylem-analytics.jp</a>                   | <b>Middle East &amp; Africa:</b><br>Xylem Analytics Middle East & Africa<br>Tel +971 4 806 1000<br><a href="mailto:Info.MEA@xylem.com">Info.MEA@xylem.com</a><br><a href="http://www.xylemanalytics.com">www.xylemanalytics.com</a> |
| <b>Australia:</b><br>Xylem Analytics Australia<br>Tel +61 1300 995362<br><a href="mailto:salesAus@xylem.com">salesAus@xylem.com</a><br><a href="http://www.xylem-analytics.com.au">www.xylem-analytics.com.au</a> | <b>China:</b><br>Xylem Analytics (Beijing) Co., Ltd<br>Tel +86 10 5785 2266<br><a href="mailto:Xylemanalytics.China@xylem.com">Xylemanalytics.China@xylem.com</a><br><a href="http://www.xylemanalytics.cn">www.xylemanalytics.cn</a> | <b>France:</b><br>Xylem Analytics France<br>Tel + 33 (0)1 46 95 32 81<br><a href="mailto:XAFcIalFR@xylem.com">XAFcIalFR@xylem.com</a><br><a href="http://www.xylemanalytics.com">www.xylemanalytics.com</a>                         |

Visit our website for more contact info

Connect with us:  [wtw.wm](https://www.facebook.com/wtw.wm)  [wtwgmbhinternational](https://www.youtube.com/channel/UCwTgmbhinternational)  [xylem.analytics.germany](https://www.instagram.com/xylem.analytics.germany)

 [xylemanalyticsgermany](https://www.linkedin.com/company/xylemanalyticsgermany)

 [xylemanalyticsgermany](https://www.xylemanalyticsgermany.com)



Xylem Analytics Germany Sales GmbH & Co. KG, WTW  
Am Achalaich 11  
82362 Weilheim, Germany  
Phone +49 881 1830  
Fax +49 881 183-420  
[Info.WTW@xylem.com](mailto:Info.WTW@xylem.com)  
[www.xylemanalytics.com](http://www.xylemanalytics.com)